



**ANANDALAYA**  
**PERIODIC TEST -3**  
**Class: VIII**

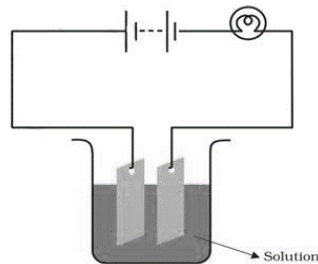
Subject: Science  
Date : 09-01-2025

MM : 40  
Time: 1 Hr. 30 min.

**General Instructions:**

1. There are 21 questions in this question paper. All questions are compulsory.
2. Q. No. 1 to 12 are objective type questions and carry 1 mark each.
3. Q. No. 13 to 15 are short answer type questions and carry 2 marks each.
4. Q. No. 16 to 19 are also short answer type questions and carry 3 marks each.
5. Q. No. 20 and 21 are long answer questions and carry 5 marks each.

1. Which of the following is not likely to cause a Tsunami? (1)  
(A) A major nuclear explosion under sea (B) Earthquake  
(C) Volcanic eruption (D) Lightning
2. An electroscope is a device which is used to find if an object is \_\_\_\_\_. (1)  
(A) charged (B) free of cracks (C) magnetic (D) hot
3. Which one of the following solutions/liquids will not conduct electricity? (1)  
(A) Lemon juice (B) Tap water (C) Vinegar (D) Vegetable oil
4. An electric current can produce \_\_\_\_\_. (1)  
(A) heating effect only (B) chemical effect only  
(C) magnetic effect only (D) chemical, heating, and magnetic effects
5. Which of the following solution will not make the bulb glow in the figure? (1)



- (A) sodium chloride (B) copper sulphate  
(C) silver nitrate (D) sugar solution
6. Animals exhibiting external fertilisation produce a large number of gametes. What is the major advantage of this phenomenon? (1)  
(A) The embryo does not receive nutrients from the parent.  
(B) There is a higher chance of fertilization failure due to environmental factors.  
(C) Only one egg gets fertilised.  
(D) This process occurs in most amphibians and fish.
  7. A child staying in a coastal region tests the drinking water and also the seawater with his tester. He finds that the compass needle deflects more in the case of seawater. Explain the reason. (1)

8. What will be the charge on a glass rod when rubbed with silk? (1)

9. What happens to a fertilized egg in the female reproductive system? (1)

For question numbers 10 to 12, two statements are given-one labelled Assertion (A) and the other labelled Reason (R). Select the correct answer to these questions from the codes (A), (B), (C) and (D) as given below.

(A) Both A and R are true and R is the correct explanation of A

(B) Both A and R are true but R is NOT the correct explanation of A.

(C) A is true but R is false

(D) A is false and R is also false.

10. A: Gujarat is earthquake prone. (1)

R: The tropic of cancer passes through Gujarat.

11. A: Chromium cannot be used for electroplating of iron. (1)

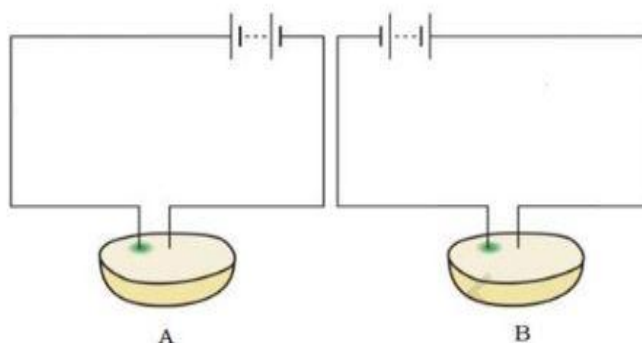
R: Chromium is a very cheap metal.

12. A: In viviparous animals, fertilization occurs internally and the embryo develops inside the female's body. (1)

R: Viviparous animals always develop their embryos outside the human body.

13. Write an activity to show that like charges repel each other. (2)

14. (a) The figure given below represents an activity to study the electrical conductivity in a potato. (2)  
A greenish blue spot on the potato around one wire was observed. Which of these two circuits A or B shows the correct observation?



(b) What is the inference/conclusion of this experiment?

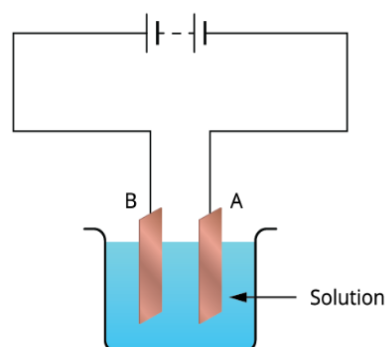
15. Draw labelled diagrams and explain the process of budding exhibited by Hydra. (2)

16. What is an epicentre of an earthquake? In what scale the magnitude of an earthquake is measured? (3)  
Write any one thing you will do in case there were an earthquake.

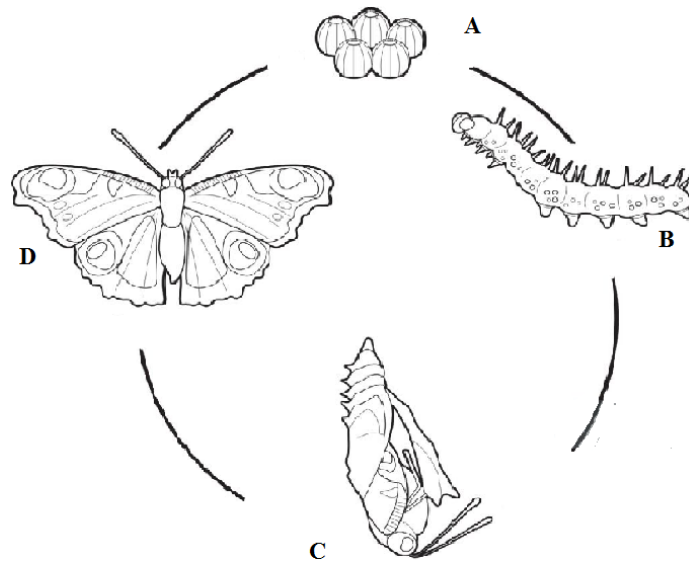
17. Neel sets up the circuit for purification of copper as shown in the figure. (3)

(a) What will be the nature of – (i) plate A  
(ii) plate B

(b) Predict the name of the solution taken here.



18. An electric current is passed through a conducting solution. List any three possible observations. (3)
19. Observe the figure that depicts the life cycle of an organism, showing four stages labelled A, B, C and D. (3)



- a) Identify and define the phenomenon exhibited by the organism.  
b) Why does the organism show various stages in its life cycle.
20. What is a lightning conductor? How is it installed? Illustrate through a diagram. (5)
21. (a) Draw a neat and labelled diagram of the male reproductive system and label the following parts: (5)
- Testes
  - Vas deferens
  - Urethra
- (b) State any two functions of the testes.  
(c) What is the role of the vas deferens in the male reproductive system?  
(d) List the functions of urethra in the male reproductive system.